

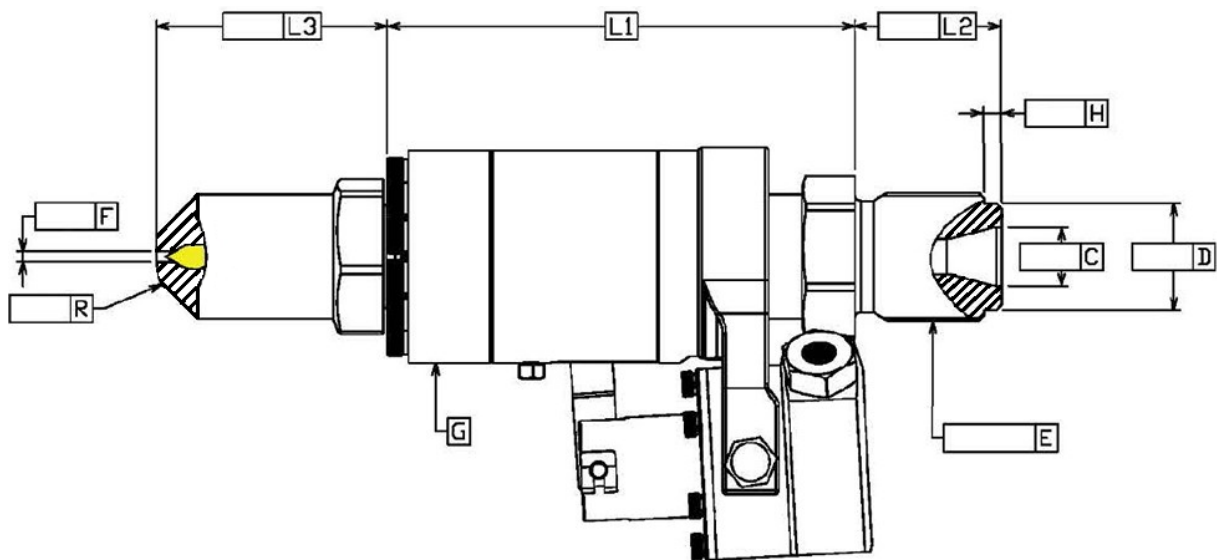
Datasheet active operated shut off nozzle (needle)

Data:

Company name:
Street:
Zip code:
City:
Phone.:
Date:

Contact person:
E-mail:
Suitable for IMM:
Nozzle type:
Pneumatic / hydraulic:
Amount:

Dimensions:



Fill in the dimensions in the empty cells above.

Specifications:

Type:		Model-I	Model-II	Model-III
Max. shot weight (indication):	gram	700	6000	30000
Max. screw diameter (indication):	mm	60	120	240
Max. machine clamping force (indication):	ton	300T	1200T	3000T
Length body (L1):	mm	140	178	240
Tip length (L3):	mm	20 / 63 / 93 / 113 / on request		
Dimension heater band (G):	mm	ø60 x 80	ø 80 x 100	ø 115 x 150
Pneumatic pressure:	bar	6	8	10
Hydraulic pressure:	bar	70	70	70
Max. injection pressure:	bar	3000		
Max. temperature:	°C	400		

The shut off nozzles will be delivered including heater band with integrated thermocouple type J.
The length of the cable is 1,5 meters.

Fill in the data and dimensions and mail the scanned document to info@hacoplast.com